

Step into Excellence



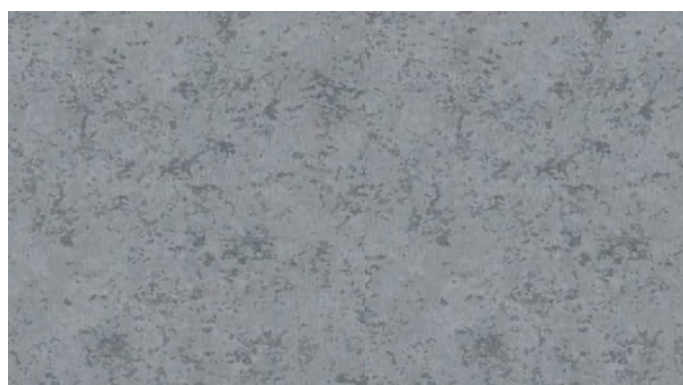
VKS STEPS PTE LTD

Step into Excellence

COMPOSITE PVC COILED MATERIAL



YD-12501



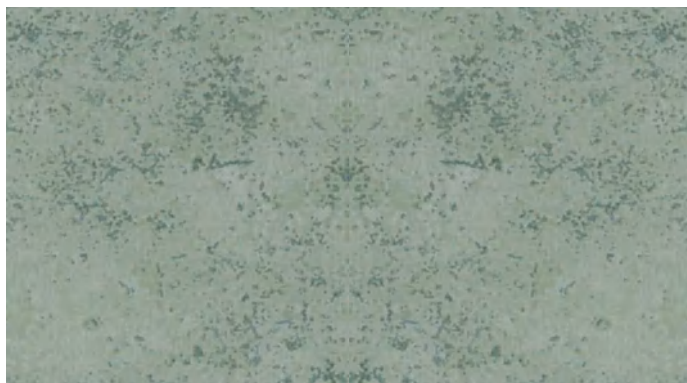
YD-12502



YD-12503



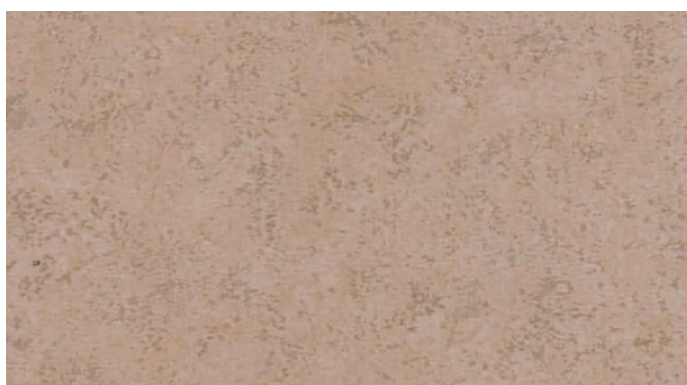
YD-12504



YD-12510



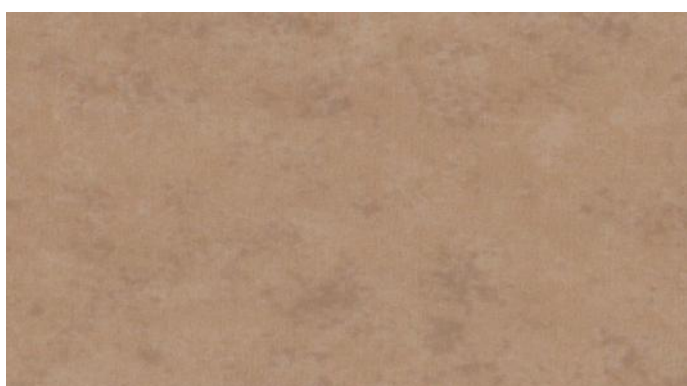
YD-12508



YD-12505



YD-12509



YD-12506



YD-12507

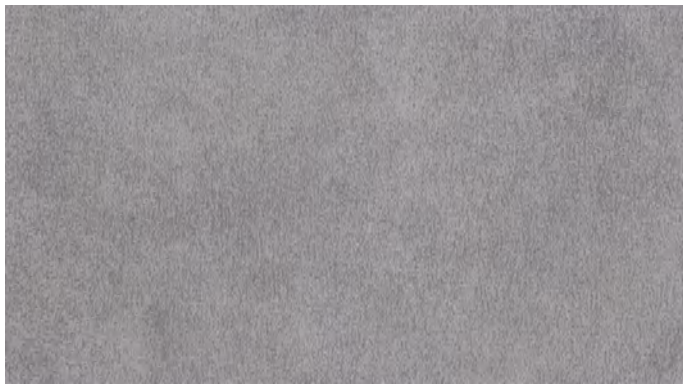




YD-0811



YD-0802



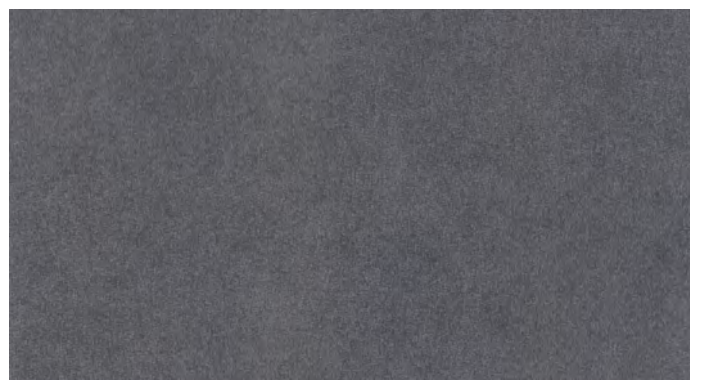
YD-0804



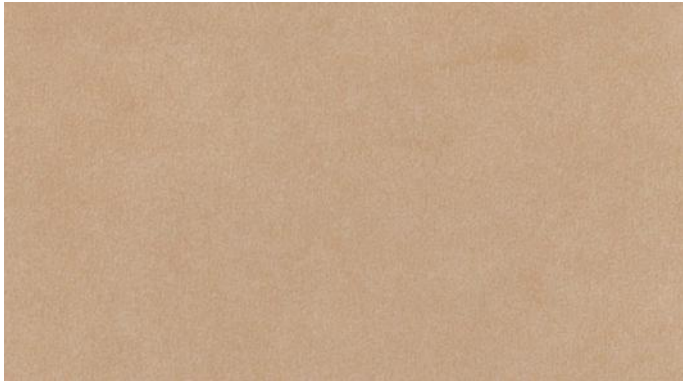
YD-0809



YD-0805



YD-0806



YD-0807



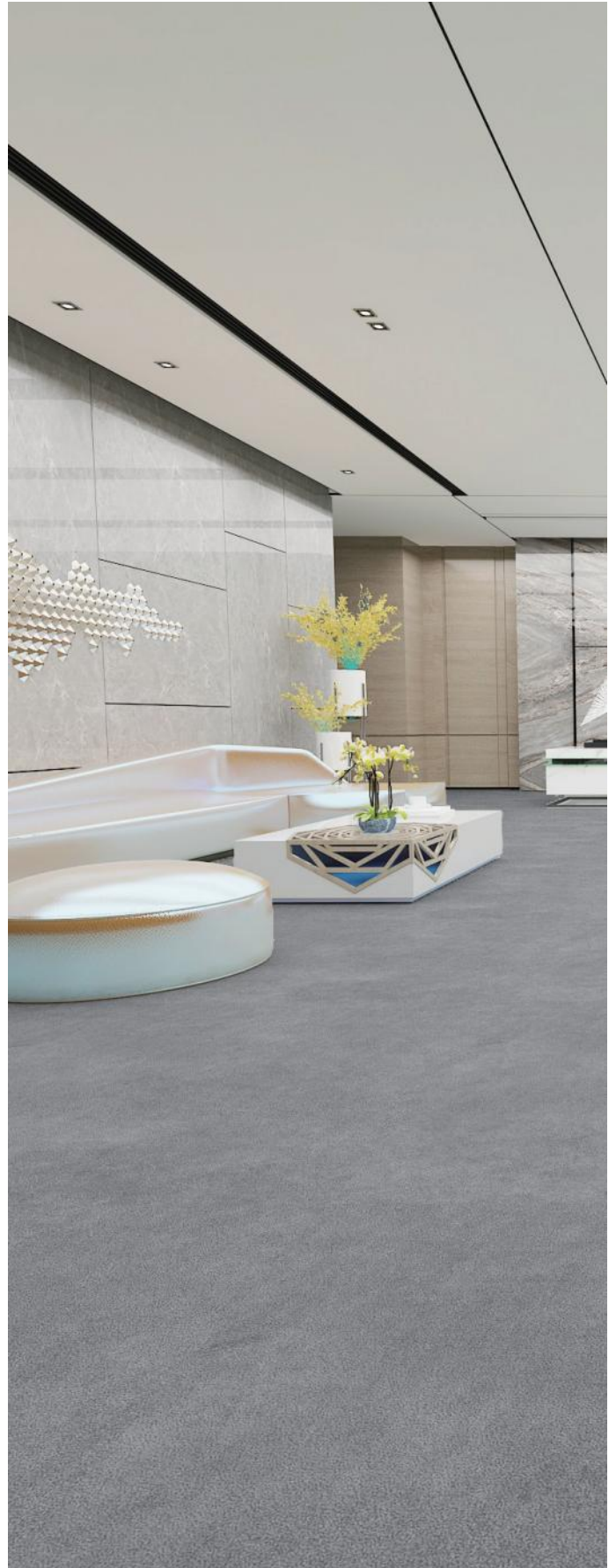
YD-0808



YD-0801

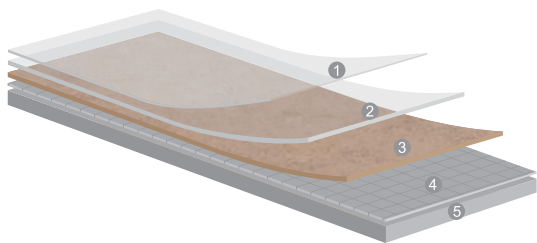


YD-0810



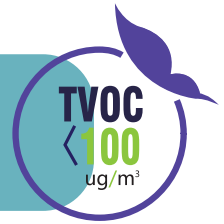


PRODUCT STRUCTURE



- | | |
|---------------------------|-----------------------------|
| ① u.v antibacterial layer | ④ Glass fiber layer |
| ② Wear layer | ⑤ High-density foamed layer |
| ③ Printed layer | |

FEWER VOC,S BETTER INDOOR AIR QUALITY



COMPOSITION

- 100%REACH compliant
- FREE of formaldehyd
- FREE of heavy metals
- FREE of solvent



RECYCLED CONTENT

- 100%REACH compliant recycle content



RECYCLABLE

- 100% recyclable product



INDOOR AIR QUALITY

- TVOC emissions 100 times lower than norm requirements(TVOC <math>< 10 \mu\text{g}/\text{m}^3</math> after 28 days)
- No formaldehyde emission



WELLNESS

- Antibacterial activity (inhibits growth>99%)

INSTALLS

Installation should be carried out in accordance with local standards.Subfloor to be smooth,hard,clea and dry prior to laying.Where applicable the subfloor must incorporate an effective Damp Proof Membrane.The materia l must be allowed to acclimatize 24 hours before installation in a room temperature of between 18–24°C.

MAINTENANCE

An emulsion dressing is required.maintenance should be carried out regularly to retain the appearance and durability of the floor.The floorcovering should be maintained with regular sweeping and damp mopping using a neutral cleanser,more intense cleaning should be carried out using a fine spray cleaning pad under a floor machine,or for larger areas combined machine cleaning.



TECHNICAL DATA

HETEROGENEOUS PVC FLOORING

Test Items	Standard	Result
Special Treatment		(UV)
Thickness in total	ISO24346-EN 428	2mm
Wear Layer Thickness	ISO23997-EN 429	0.35mm
Weight	ISO23997-EN 430	3200g/m ²
Width	ISO24341-EN 426	2m
Length	ISO24341-EN 426	20m
Wear Rate	EN 660	TGrade
Fire resistance	GB 8624-2012	B ₁ -S1.t0Grade
Heat Crimp	EN 434	Great
Geothermal		Qualified
Static Indentation	EN 433	0.16
Colour fastness	ENISO 105-B02	≥6
Chemical products resistance	EN 423	Great
Dimensional stability	En 434	≤0.13%
Slip resistance	DIN 51130	R9
Castor chair	EN 425	No Damage
Sound Insulation	EN ISO 717/2	19dB
Electrical Resistance	EN 1081	≤10 ⁹
Anti-bacterial	QB/T2591-2003	Great
Anti-iodine Performance	ASTM F925	Qualified
Toxic testing	GB/T 18586-2001	Great

Catalog is only for color selection, the approved color is subject to the actual large sample

